

Wild At Heart Men's Retreat 2012

Who Are We?

Wild at Heart presents the eternal Gospel with words and images in a way that speaks to the hearts of men. Wild at Heart is a movement, a wildfire started by God in the hearts of a few men and fanned into flame by His Spirit. It's a calling of God through Christ who came to "bind up the brokenhearted, to proclaim freedom for the captives, and release from darkness the prisoners." (Isaiah 61:1)

Our Theme For The Weekend

"Be sober, be vigilant; because your adversary the devil walks about like a roaring lion, seeking whom he may devour. Resist him, steadfast in the faith, knowing that the same sufferings are experienced by your brotherhood in the world." 1 Peter 5:8-9

You're Not Alone!

We are standing up with men from across the country and around the world. We are standing up for the future. We are standing up for families. We are standing up for Christ....

Beautiful by creation, sacred by association.

2750 Bible Camp Road
Rhineland, WI 54501
www.clbc.net



Wild At Heart Men's Retreat 2012

"How God Forges and Refines Us..."



March 9 - 11, 2012

**Hosted By:
Crescent Lake Bible Camp
Rhineland, Wisconsin**

**Crescent Lake Bible Camp
2750 Bible Camp Road
Rhineland, WI 54501**

(715) 203 - 0500
www.clbc.net

Wild At Heart Men's Retreat 2012 - Registration Form

Names of all attending: _____

Address: _____ City: _____ State: _____ Zip: _____

Phone Number: _____ Email Address: _____

Method of payment: Cash Check # _____ Discover / Mastercard / Visa (please circle one)

Credit Card #: _____ Exp. Date: _____

Signature: _____ Home Church (if applicable): _____

Rustic Cabin (\$109.00 per Person) Modern Cabin (\$119.00 per Person) Hotel-Style Cabin (\$129.00 per Person)
(Register before January 1, 2012 and receive \$10.00 off per person.)

Send Registration Form and the \$25.00 non-refundable deposit (per person) no later than February 20th to:

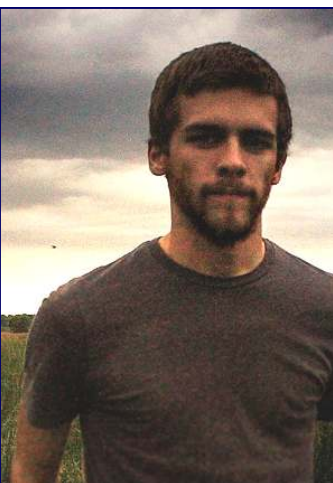
Crescent Lake Bible Camp • 2750 Bible Camp Road • Rhineland, WI 54501 • (715) 203 - 0500



Winter Activities

Crescent Lake Bible Camp has a wide range of winter activities! Currently, we are planning: broomball, climbing tower, cross-country skiing, ice bowling, ice fishing, outdoor survival / tracking, paintball, snowmobiling, snowshoeing, tubing and so much more! When you need to warm up, come inside and grab a cup of coffee and enjoy fellowship as you play board and card games or spend time in our Rec Room! (Please note that it is \$5.00 per 100 paintballs if you wish to play.) Be sure to check out our website at www.clbc.net to see all we have to offer!

We will also be offering a special workshop on sword-making led by David DelaGardelle!



Special guest speaker David DelaGardelle of Mad Dwarf Workshop.

Swordsmith who, with co-artist Andy Davis, created the "Sword of Heimdall" for the motion picture "Thor".

The Important Stuff...

Chapel Services are based on the book Wild At Heart, by John Eldredge. Participants are requested to purchase a copy of the book prior to the "Wild At Heart" retreat. Please visit www.ransomedheart.com for more information.

Lodging Styles vary depending on location. Rustic Cabins feature a fireplace for heat and utilize a centrally-located bathhouse. Modern Cabins feature central heating and have bathrooms inside the buildings. Hotel-Style accommodations have modern amenities and include linen service.

Meals are included with the fee. Please let the camp know if you have any life-threatening allergies that we need to accommodate.

Check-In on Friday begins at 1:00 p.m. in the Main Office. The first session will begin at 3:30 p.m. If you would like to start your weekend early, you are welcome to come up on Thursday. The cost for Thursday night is \$10.00 per person. Please note that meals and programming are not available until Friday afternoon. If you have any questions, please call us at (715) 203 - 0500.

If you would like to add snowmobiling through the Northwoods as part of your adventure, please contact us to set up a guide. Snowmobiles are available for rent from Rhineland, if desired.

Spaces are limited.

